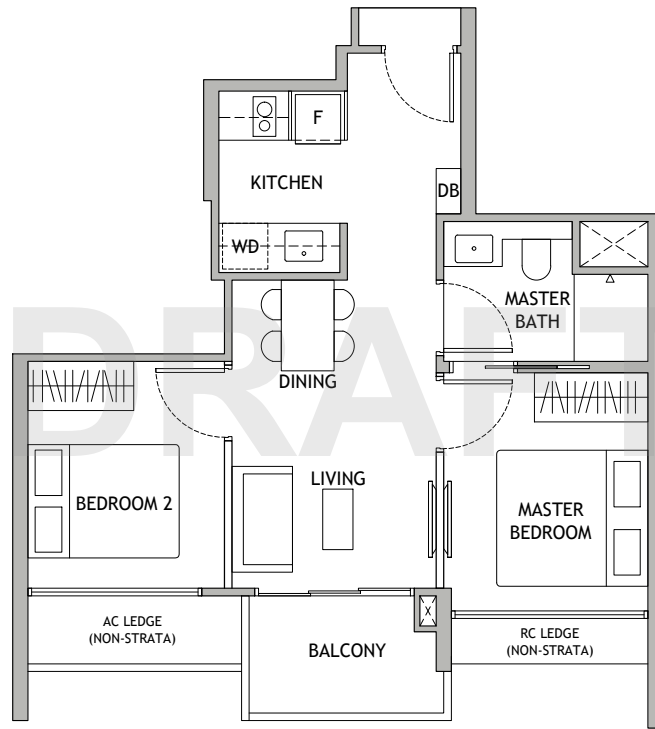


# 2 BEDROOM

# LUXURY COLLECTION

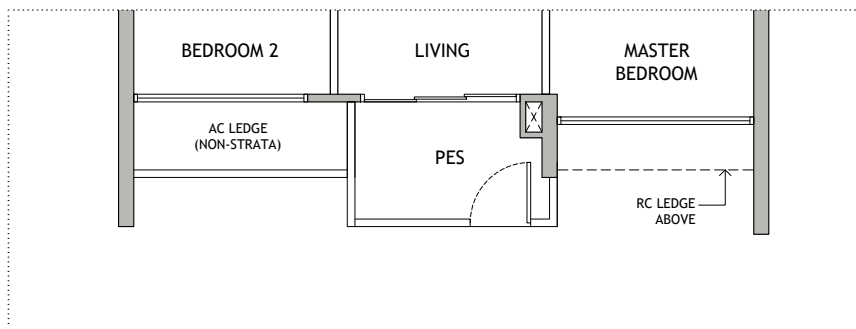
## Type B1

49 sqm | 527 sqft  
 768 Dunearn Road  
 #02-17\* to #10-17\*  
 770 Dunearn Road  
 #02-32 to #10-32



## Type B1 (P)

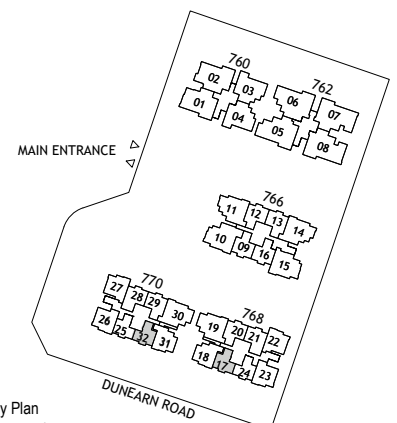
49 sqm | 527 sqft  
 768 Dunearn Road  
 #01-17\*  
 770 Dunearn Road  
 #01-32



### LEGEND: (WHERE APPLICABLE)

AC	Air-Conditioner	WD	Washer cum dryer
CH	Wine chiller	WC	Water Closet
DB	Distribution Board	⊠	Void Space (excluded from strata area)
F	Fridge	■	Wall not allowed to be hacked or altered
HS	Household Shelter	*	Mirrored Unit
PES	Private Enclosed Space		
RC	Reinforced Concrete		
ST	Storage		

DISCLAIMER : Area includes balcony or PES where applicable and excludes, among others, the AC ledge and RC ledge. Please refer to the key plan for orientation. All floor plans are approximate measurements only and are subject to government re-survey. The balcony or PES shall not be enclosed unless with the approved balcony or PES screen. The cost of screen and installation shall be borne by the purchaser.

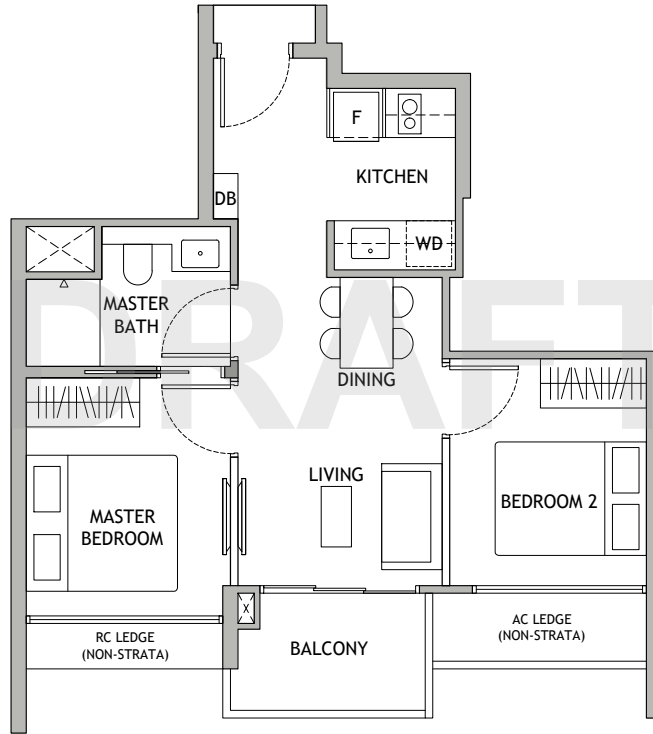


# 2 BEDROOM

# LUXURY COLLECTION

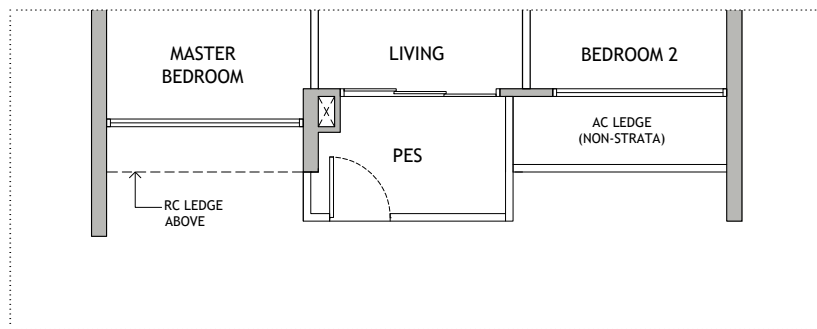
## Type B1a

49 sqm | 527 sqft  
 768 Dunearn Road  
 #02-24\* to #10-24\*  
 770 Dunearn Road  
 #02-25 to #10-25



## Type B1a (P)

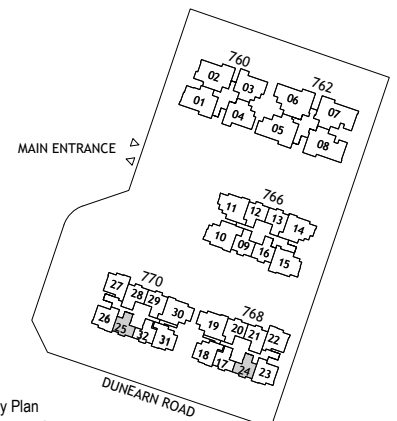
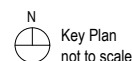
49 sqm | 527 sqft  
 768 Dunearn Road  
 #01-24\*  
 770 Dunearn Road  
 #01-25



### LEGEND: (WHERE APPLICABLE)

- |     |                        |    |  |
|-----|------------------------|----|--|
| AC  | Air-Conditioner        | WD | Washer cum dryer                         |
| CH  | Wine chiller           | WC | Water Closet                             |
| DB  | Distribution Board     |    | Void Space (excluded from strata area)   |
| F   | Fridge                 |    | Wall not allowed to be hacked or altered |
| HS  | Household Shelter      | *  | Mirrored Unit                            |
| PES | Private Enclosed Space |    |  |
| RC  | Reinforced Concrete    |    |  |
| ST  | Storage                |    |  |

DISCLAIMER : Area includes balcony or PES where applicable and excludes, among others, the AC ledge and RC ledge. Please refer to the key plan for orientation. All floor plans are approximate measurements only and are subject to government re-survey. The balcony or PES shall not be enclosed unless with the approved balcony or PES screen. The cost of screen and installation shall be borne by the purchaser.

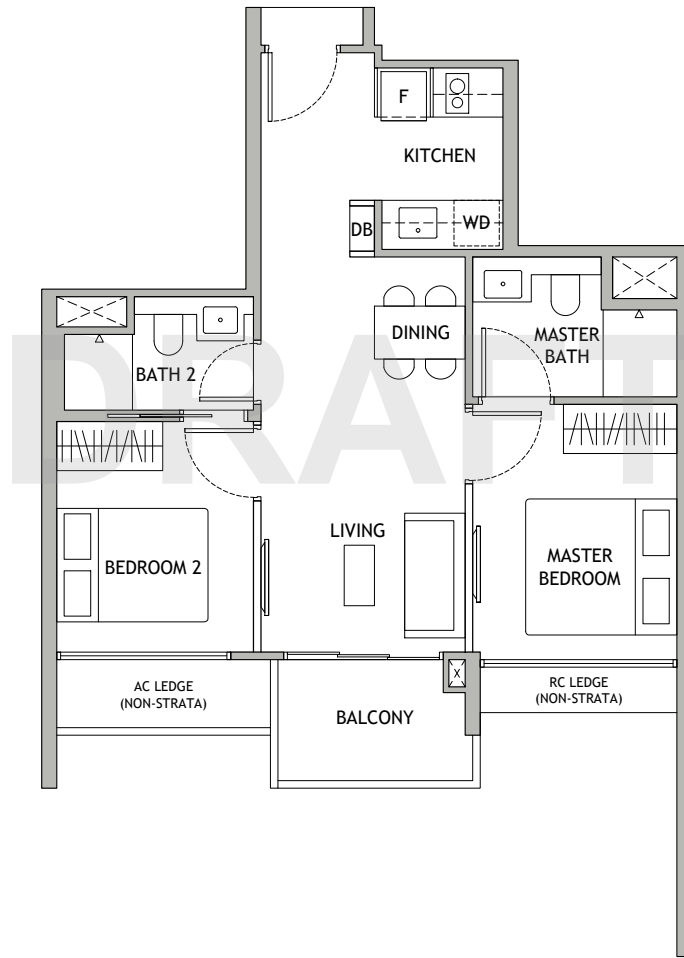


# 2 BEDROOM PREMIUM

# LUXURY COLLECTION

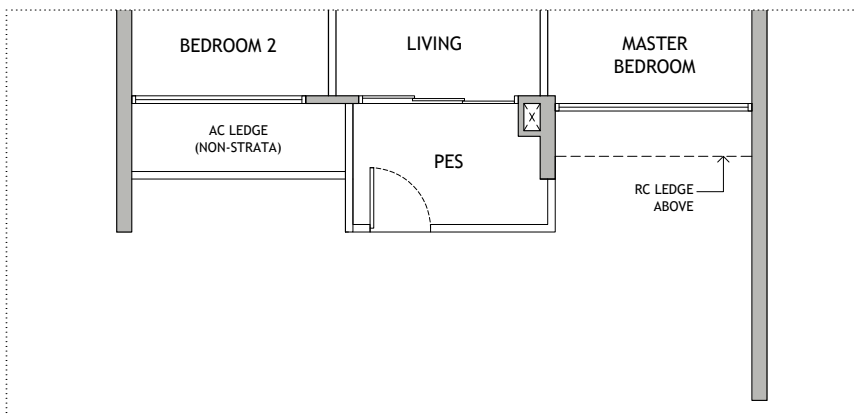
## Type BP1

57 sqm | 614 sqft  
 766 Dunearn Road  
 #02-16 to #10-16



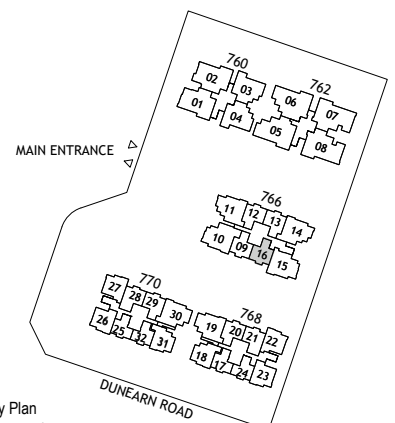
## Type BP1 (P)

57 sqm | 614 sqft  
 766 Dunearn Road  
 #01-16

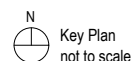


### LEGEND: (WHERE APPLICABLE)

- |     |                        |    |  |
|-----|------------------------|----|--|
| AC  | Air-Conditioner        | WD | Washer cum dryer                         |
| CH  | Wine chiller           | WC | Water Closet                             |
| DB  | Distribution Board     | ⊠  | Void Space (excluded from strata area)   |
| F   | Fridge                 | ■  | Wall not allowed to be hacked or altered |
| HS  | Household Shelter      | *  | Mirrored Unit                            |
| PES | Private Enclosed Space |    |  |
| RC  | Reinforced Concrete    |    |  |
| ST  | Storage                |    |  |



DISCLAIMER : Area includes balcony or PES where applicable and excludes, among others, the AC ledge and RC ledge. Please refer to the key plan for orientation. All floor plans are approximate measurements only and are subject to government re-survey. The balcony or PES shall not be enclosed unless with the approved balcony or PES screen. The cost of screen and installation shall be borne by the purchaser.

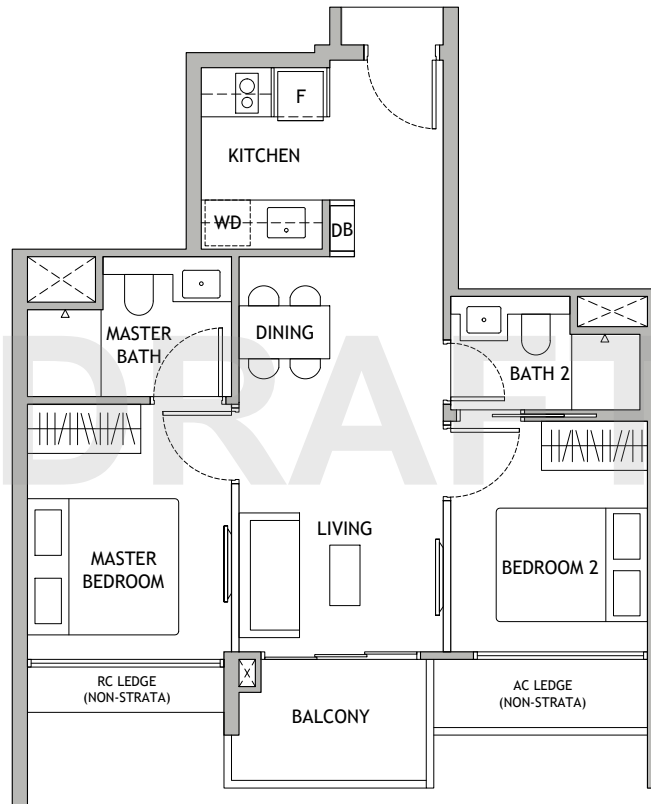


# 2 BEDROOM PREMIUM

# LUXURY COLLECTION

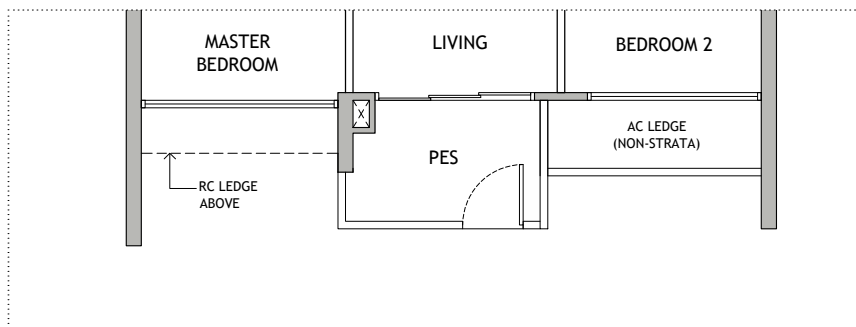
## Type BP1a

57 sqm | 614 sqft  
 766 Dunearn Road  
 #02-09 to #10-09



## Type BP1a (P)

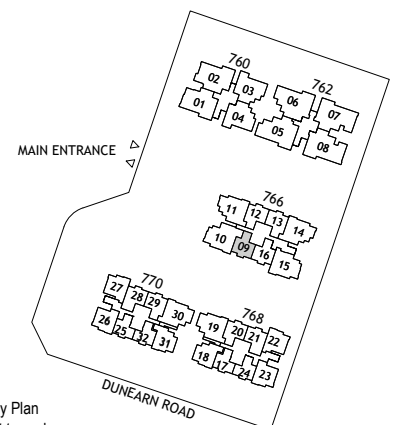
57 sqm | 614 sqft  
 766 Dunearn Road  
 #01-09



### LEGEND: (WHERE APPLICABLE)

- |     |                        |    |  |
|-----|------------------------|----|--|
| AC  | Air-Conditioner        | WD | Washer cum dryer                         |
| CH  | Wine chiller           | WC | Water Closet                             |
| DB  | Distribution Board     | ⊠  | Void Space (excluded from strata area)   |
| F   | Fridge                 | ■  | Wall not allowed to be hacked or altered |
| HS  | Household Shelter      | *  | Mirrored Unit                            |
| PES | Private Enclosed Space |    |  |
| RC  | Reinforced Concrete    |    |  |
| ST  | Storage                |    |  |

DISCLAIMER : Area includes balcony or PES where applicable and excludes, among others, the AC ledge and RC ledge. Please refer to the key plan for orientation. All floor plans are approximate measurements only and are subject to government re-survey. The balcony or PES shall not be enclosed unless with the approved balcony or PES screen. The cost of screen and installation shall be borne by the purchaser.



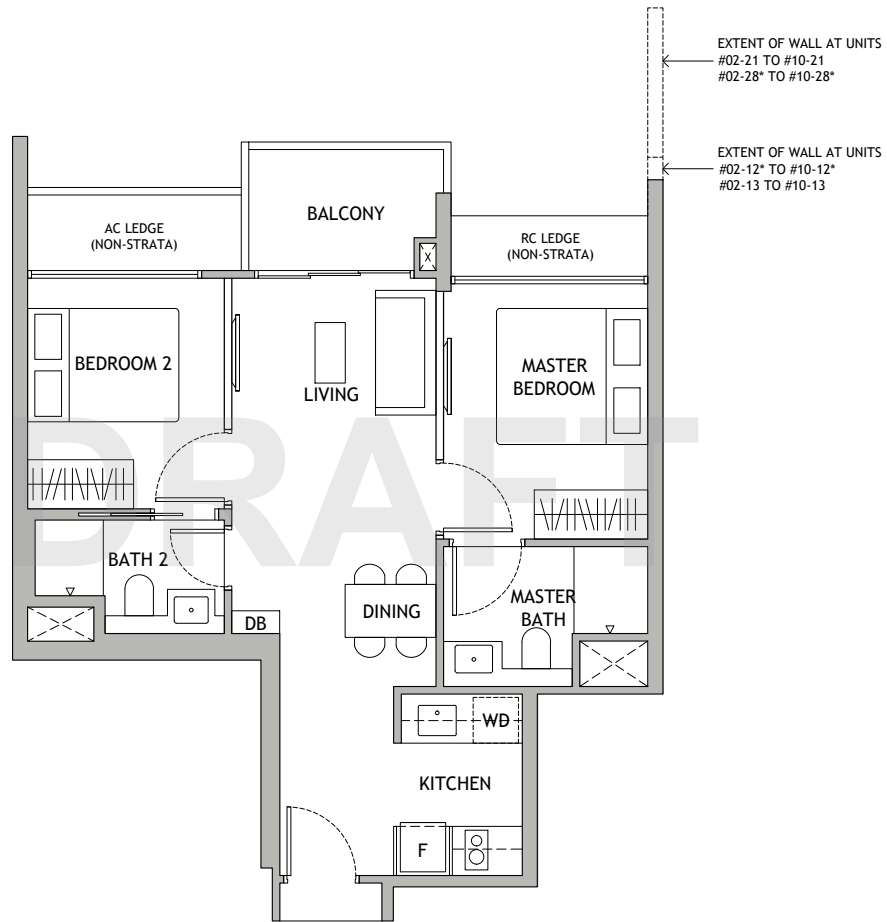
N  
 Key Plan  
 not to scale

# 2 BEDROOM PREMIUM

# LUXURY COLLECTION

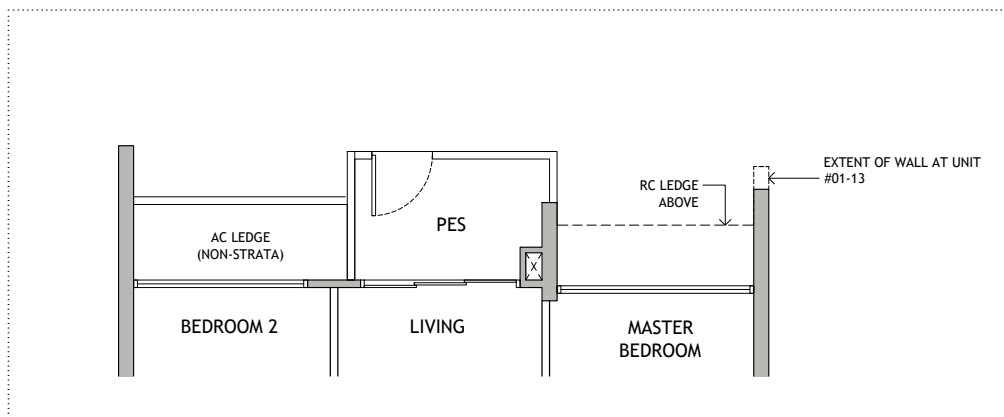
## Type BP2

57 sqm | 614 sqft  
 766 Dunearn Road  
 #02-12\* to #10-12\*  
 #02-13 to #10-13  
 768 Dunearn Road  
 #02-20\* to #10-20\*  
 #02-21 to #10-21  
 770 Dunearn Road  
 #02-28\* to #10-28\*  
 #02-29 to #10-29



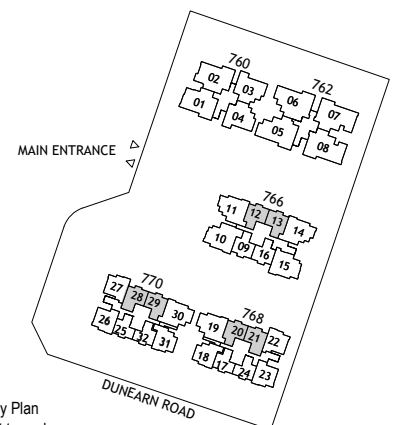
## Type BP2 (P)

57 sqm | 614 sqft  
 766 Dunearn Road  
 #01-13  
 768 Dunearn Road  
 #01-20\*  
 770 Dunearn Road  
 #01-29

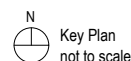


### LEGEND: (WHERE APPLICABLE)

AC	Air-Conditioner	WD	Washer cum dryer
CH	Wine chiller	WC	Water Closet
DB	Distribution Board	⊠	Void Space (excluded from strata area)
F	Fridge	■	Wall not allowed to be hacked or altered
HS	Household Shelter	*	Mirrored Unit
PES	Private Enclosed Space		
RC	Reinforced Concrete		
ST	Storage		



DISCLAIMER : Area includes balcony or PES where applicable and excludes, among others, the AC ledge and RC ledge. Please refer to the key plan for orientation. All floor plans are approximate measurements only and are subject to government re-survey. The balcony or PES shall not be enclosed unless with the approved balcony or PES screen. The cost of screen and installation shall be borne by the purchaser.

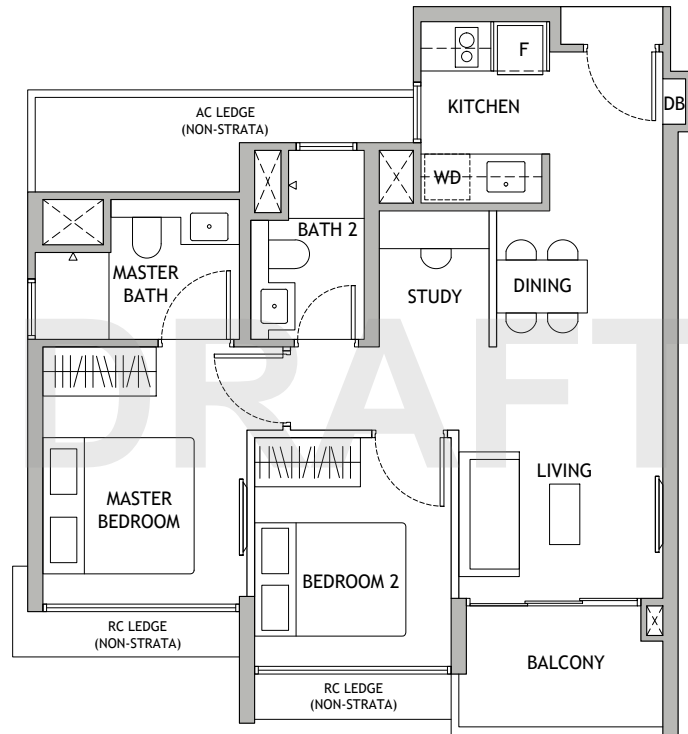


# 2 BEDROOM + STUDY

# LUXURY COLLECTION

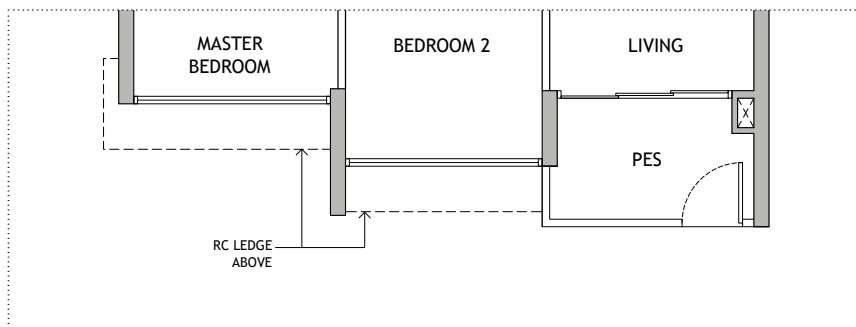
## Type BS1

61 sqm | 657 sqft  
 768 Dunearn Road  
 #02-23\* to #10-23\*  
 770 Dunearn Road  
 #02-26 to #10-26



## Type BS1 (P)

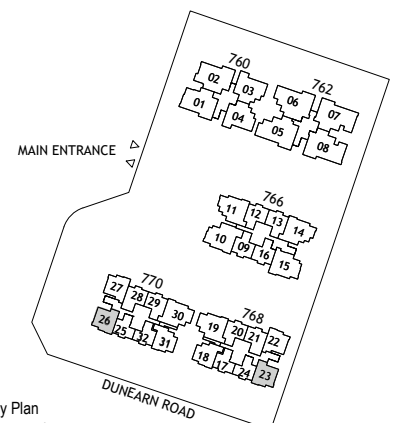
61 sqm | 657 sqft  
 768 Dunearn Road  
 #01-23\*  
 770 Dunearn Road  
 #01-26



### LEGEND: (WHERE APPLICABLE)

AC	Air-Conditioner	WD	Washer cum dryer
CH	Wine chiller	WC	Water Closet
DB	Distribution Board		Void Space (excluded from strata area)
F	Fridge		Wall not allowed to be hacked or altered
HS	Household Shelter	*	Mirrored Unit
PES	Private Enclosed Space		
RC	Reinforced Concrete		
ST	Storage		

DISCLAIMER : Area includes balcony or PES where applicable and excludes, among others, the AC ledge and RC ledge. Please refer to the key plan for orientation. All floor plans are approximate measurements only and are subject to government re-survey. The balcony or PES shall not be enclosed unless with the approved balcony or PES screen. The cost of screen and installation shall be borne by the purchaser.



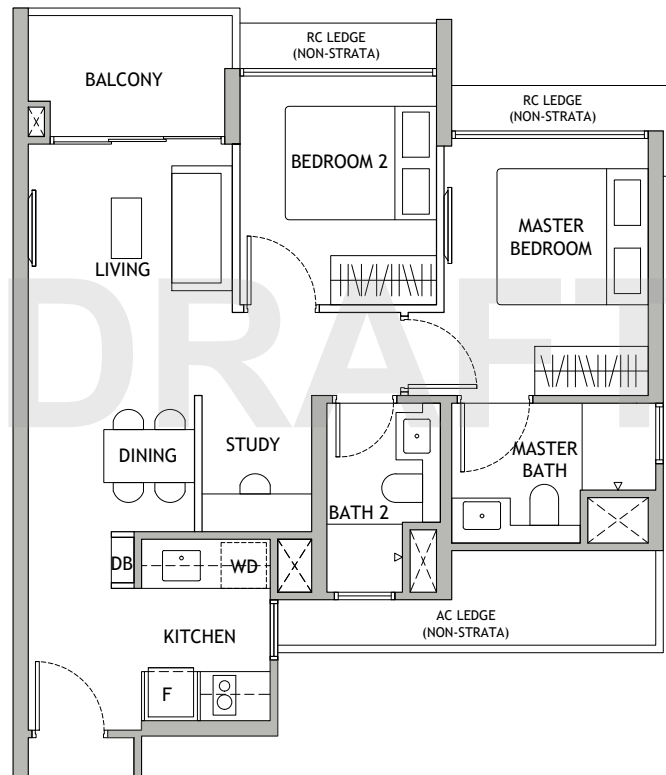
N  
 Key Plan  
 not to scale

# 2 BEDROOM + STUDY

# LUXURY COLLECTION

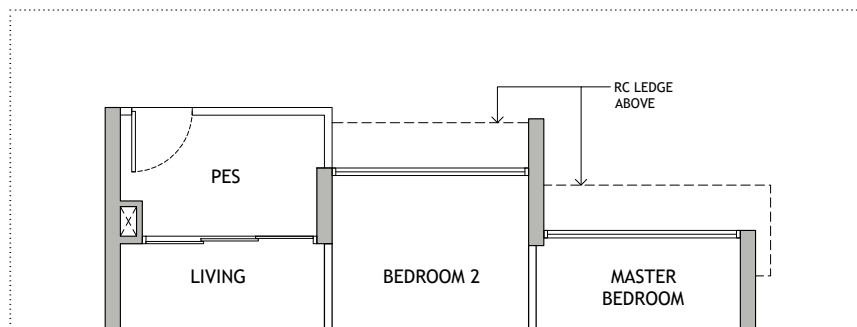
## Type BS2

62 sqm | 667 sqft  
 768 Dunearn Road  
 #02-22 to #10-22  
 770 Dunearn Road  
 #02-27\* to #10-27\*



## Type BS2 (P)

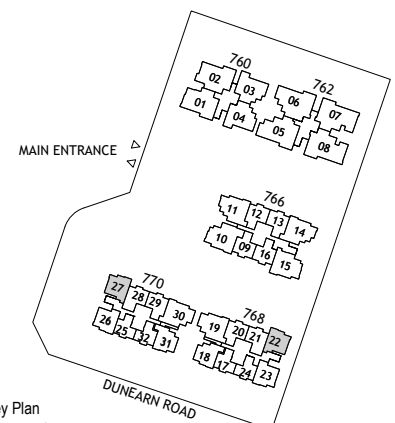
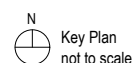
62 sqm | 667 sqft  
 768 Dunearn Road  
 #01-22



### LEGEND: (WHERE APPLICABLE)

- |     |                        |    |  |
|-----|------------------------|----|--|
| AC  | Air-Conditioner        | WD | Washer cum dryer                         |
| CH  | Wine chiller           | WC | Water Closet                             |
| DB  | Distribution Board     | ⊠  | Void Space (excluded from strata area)   |
| F   | Fridge                 | ■  | Wall not allowed to be hacked or altered |
| HS  | Household Shelter      | *  | Mirrored Unit                            |
| PES | Private Enclosed Space |    |  |
| RC  | Reinforced Concrete    |    |  |
| ST  | Storage                |    |  |

DISCLAIMER : Area includes balcony or PES where applicable and excludes, among others, the AC ledge and RC ledge. Please refer to the key plan for orientation. All floor plans are approximate measurements only and are subject to government re-survey. The balcony or PES shall not be enclosed unless with the approved balcony or PES screen. The cost of screen and installation shall be borne by the purchaser.

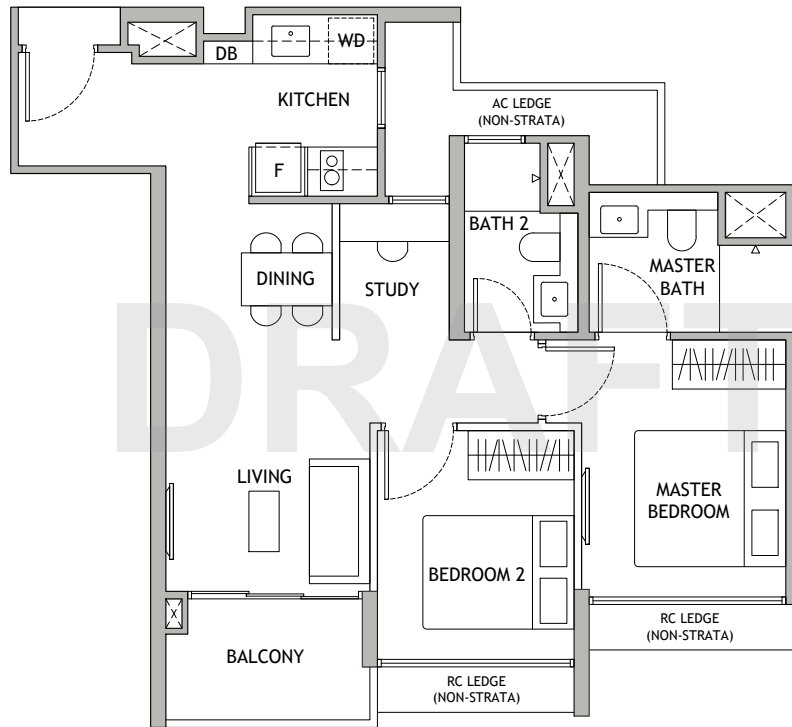


# 2 BEDROOM + STUDY

# LUXURY COLLECTION

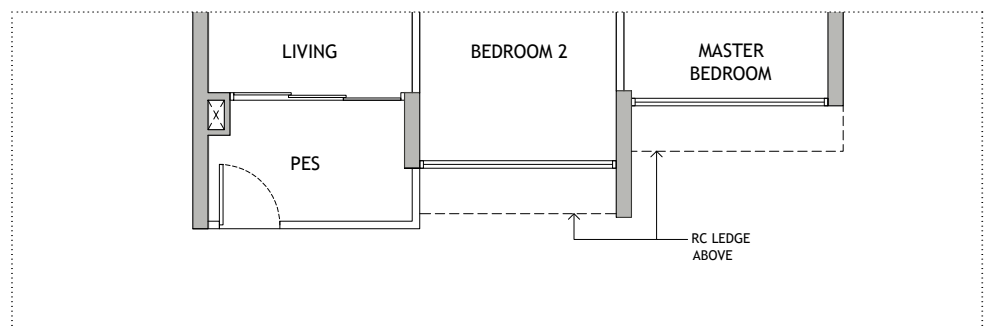
## Type BS3

63 sqm | 678 sqft  
768 Dunearn Road  
#02-18\* to #10-18\*  
770 Dunearn Road  
#02-31 to #10-31



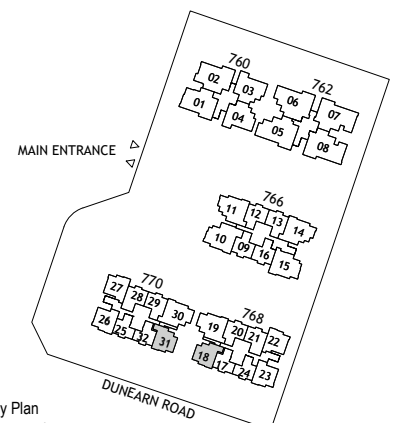
## Type BS3 (P)

63 sqm | 678 sqft  
768 Dunearn Road  
#01-18\*  
770 Dunearn Road  
#01-31



### LEGEND: (WHERE APPLICABLE)

AC	Air-Conditioner	WD	Washer cum dryer
CH	Wine chiller	WC	Water Closet
DB	Distribution Board		Void Space (excluded from strata area)
F	Fridge		Wall not allowed to be hacked or altered
HS	Household Shelter	*	Mirrored Unit
PES	Private Enclosed Space		
RC	Reinforced Concrete		
ST	Storage		



DISCLAIMER : Area includes balcony or PES where applicable and excludes, among others, the AC ledge and RC ledge. Please refer to the key plan for orientation. All floor plans are approximate measurements only and are subject to government re-survey. The balcony or PES shall not be enclosed unless with the approved balcony or PES screen. The cost of screen and installation shall be borne by the purchaser.

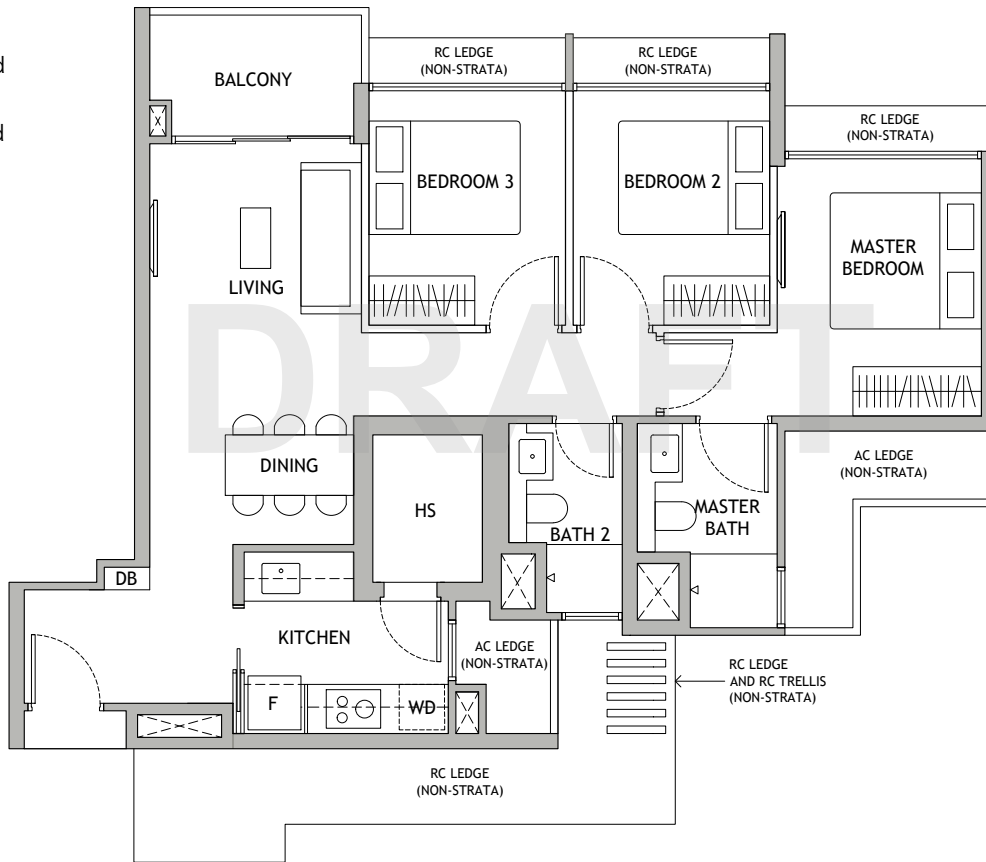
Key Plan  
not to scale

# 3 BEDROOM

# LUXURY COLLECTION

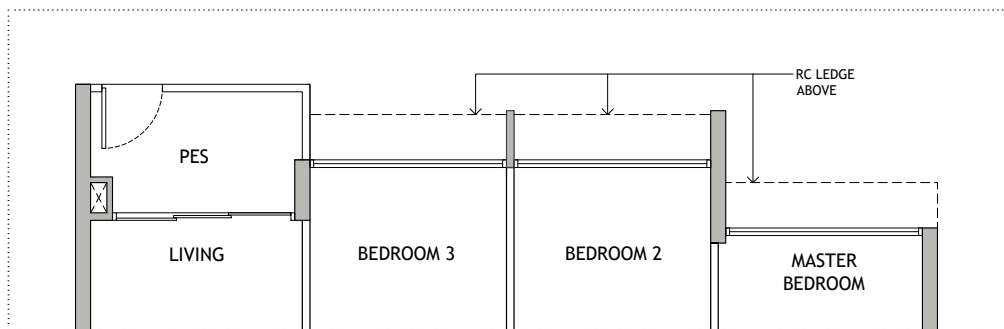
## Type C1

81 sqm | 872 sqft  
 768 Dunearn Road  
 #02-19\* to #10-19\*  
 770 Dunearn Road  
 #02-30 to #10-30



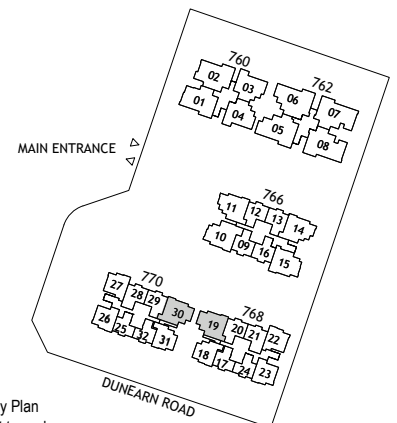
## Type C1 (P)

81 sqm | 872 sqft  
 768 Dunearn Road  
 #01-19\*  
 770 Dunearn Road  
 #01-30



### LEGEND: (WHERE APPLICABLE)

AC	Air-Conditioner	WD	Washer cum dryer
CH	Wine chiller	WC	Water Closet
DB	Distribution Board	⊠	Void Space (excluded from strata area)
F	Fridge	■	Wall not allowed to be hacked or altered
HS	Household Shelter	*	Mirrored Unit
PES	Private Enclosed Space		
RC	Reinforced Concrete		
ST	Storage		



DISCLAIMER : Area includes balcony or PES where applicable and excludes, among others, the AC ledge and RC ledge. Please refer to the key plan for orientation. All floor plans are approximate measurements only and are subject to government re-survey. The balcony or PES shall not be enclosed unless with the approved balcony or PES screen. The cost of screen and installation shall be borne by the purchaser.

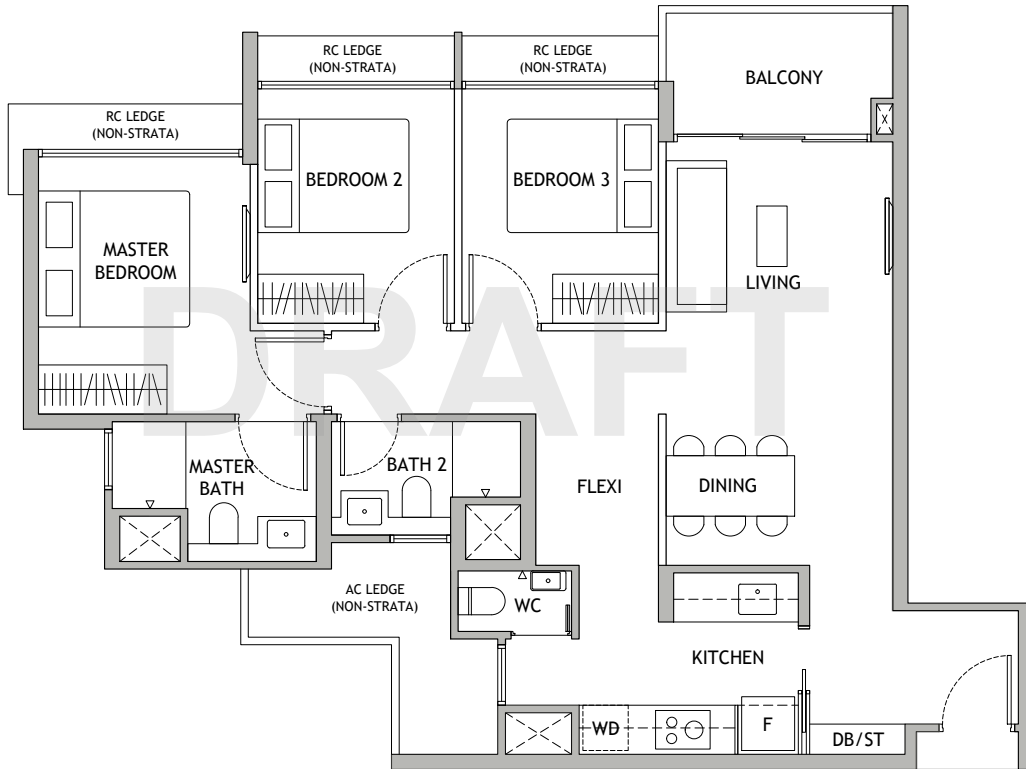
N  
 Key Plan  
 not to scale

# 3 BEDROOM + FLEXI

# LUXURY COLLECTION

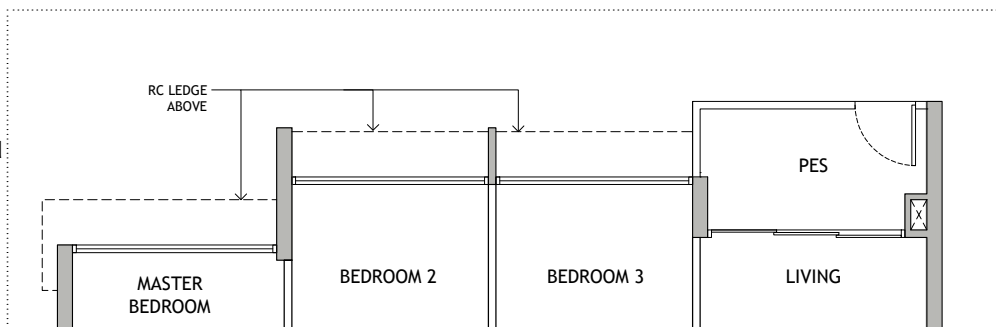
## Type C2

87 sqm | 936 sqft  
766 Dunearn Road  
#02-11 to #10-11  
#02-14\* to #10-14\*



## Type C2 (P)

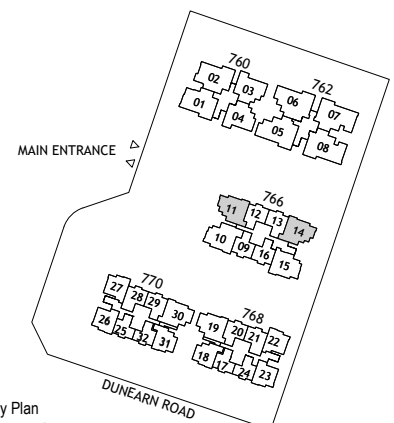
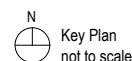
87 sqm | 936 sqft  
766 Dunearn Road  
#01-11  
#01-14\*



### LEGEND: (WHERE APPLICABLE)

AC	Air-Conditioner	WD	Washer cum dryer
CH	Wine chiller	WC	Water Closet
DB	Distribution Board		Void Space (excluded from strata area)
F	Fridge		Wall not allowed to be hacked or altered
HS	Household Shelter	*	Mirrored Unit
PES	Private Enclosed Space		
RC	Reinforced Concrete		
ST	Storage		

DISCLAIMER : Area includes balcony or PES where applicable and excludes, among others, the AC ledge and RC ledge. Please refer to the key plan for orientation. All floor plans are approximate measurements only and are subject to government re-survey. The balcony or PES shall not be enclosed unless with the approved balcony or PES screen. The cost of screen and installation shall be borne by the purchaser.

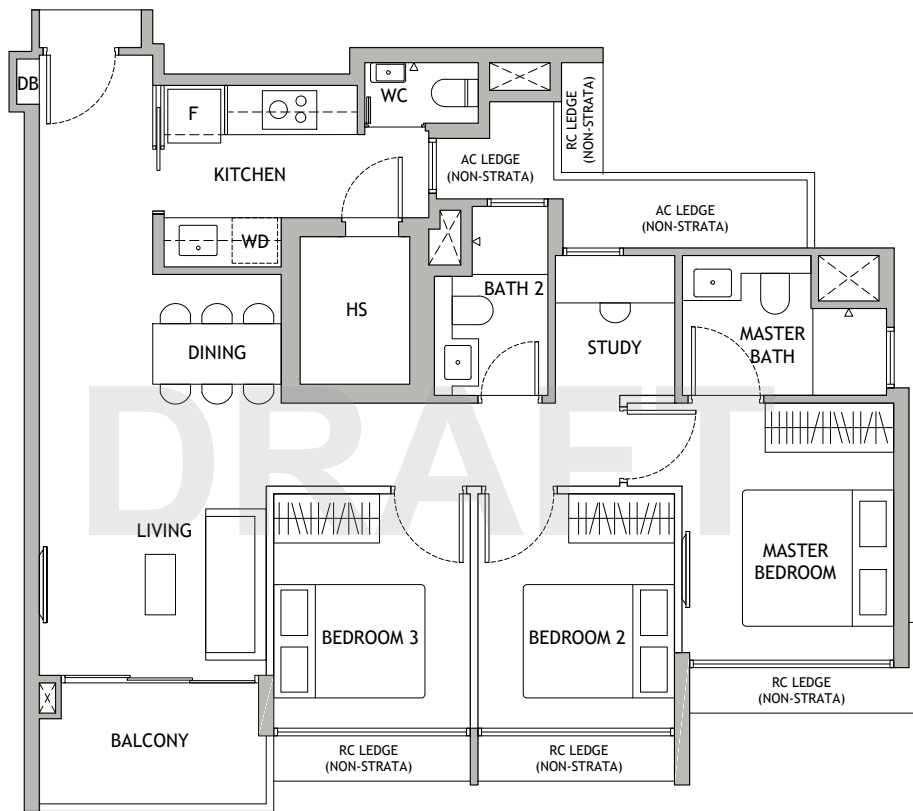


# 3 BEDROOM + STUDY

# LUXURY COLLECTION

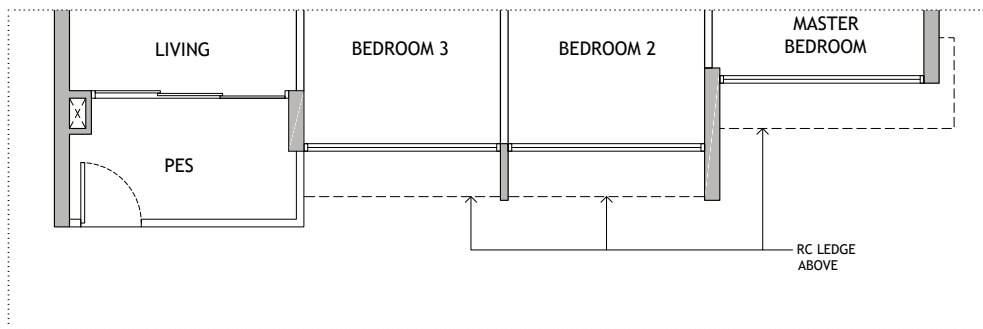
## Type CS1

88 sqm | 947 sqft  
766 Dunearn Road  
#02-15 to #10-15



## Type CS1 (P)

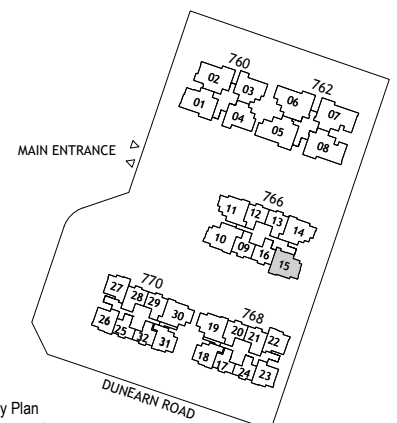
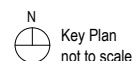
88 sqm | 947 sqft  
766 Dunearn Road  
#01-15



### LEGEND: (WHERE APPLICABLE)

AC	Air-Conditioner	WD	Washer cum dryer
CH	Wine chiller	WC	Water Closet
DB	Distribution Board		Void Space (excluded from strata area)
F	Fridge		Wall not allowed to be hacked or altered
HS	Household Shelter	*	Mirrored Unit
PES	Private Enclosed Space		
RC	Reinforced Concrete		
ST	Storage		

DISCLAIMER : Area includes balcony or PES where applicable and excludes, among others, the AC ledge and RC ledge. Please refer to the key plan for orientation. All floor plans are approximate measurements only and are subject to government re-survey. The balcony or PES shall not be enclosed unless with the approved balcony or PES screen. The cost of screen and installation shall be borne by the purchaser.

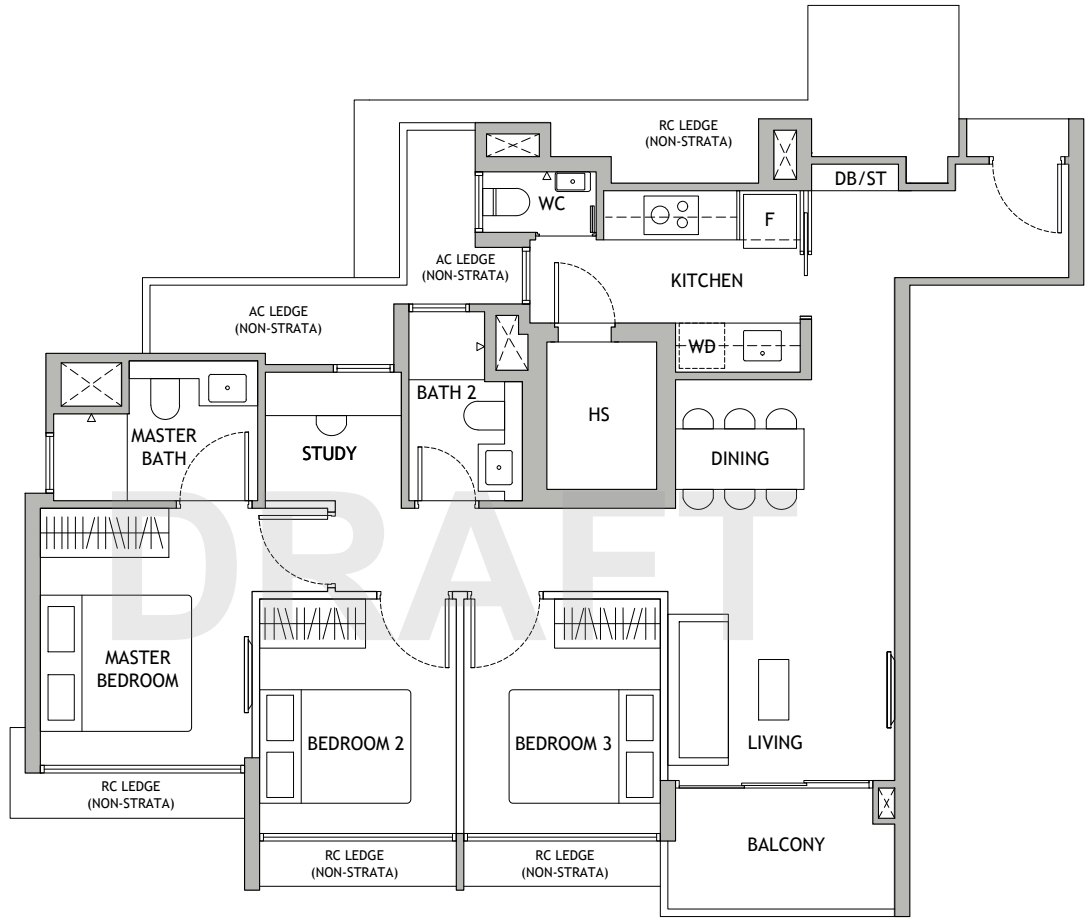


# 3 BEDROOM + STUDY

# LUXURY COLLECTION

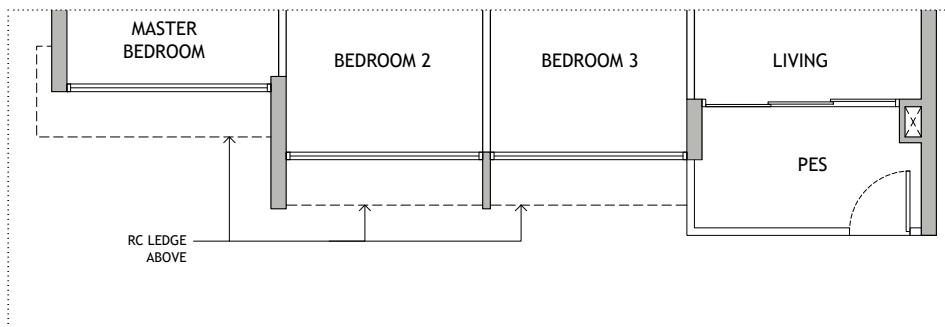
Type CS2

90 sqm | 969 sqft  
766 Dunearn Road  
#02-10 to #10-10



Type CS2 (P)

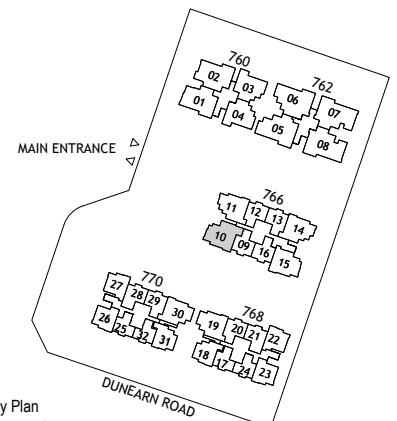
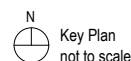
90 sqm | 969 sqft  
766 Dunearn Road  
#01-10



**LEGEND:  
(WHERE APPLICABLE)**

- |     |                        |    |  |
|-----|------------------------|----|--|
| AC  | Air-Conditioner        | WD | Washer cum dryer                         |
| CH  | Wine chiller           | WC | Water Closet                             |
| DB  | Distribution Board     | ⊠  | Void Space (excluded from strata area)   |
| F   | Fridge                 | ■  | Wall not allowed to be hacked or altered |
| HS  | Household Shelter      | *  | Mirrored Unit                            |
| PES | Private Enclosed Space |    |  |
| RC  | Reinforced Concrete    |    |  |
| ST  | Storage                |    |  |

DISCLAIMER : Area includes balcony or PES where applicable and excludes, among others, the AC ledge and RC ledge. Please refer to the key plan for orientation. All floor plans are approximate measurements only and are subject to government re-survey. The balcony or PES shall not be enclosed unless with the approved balcony or PES screen. The cost of screen and installation shall be borne by the purchaser.

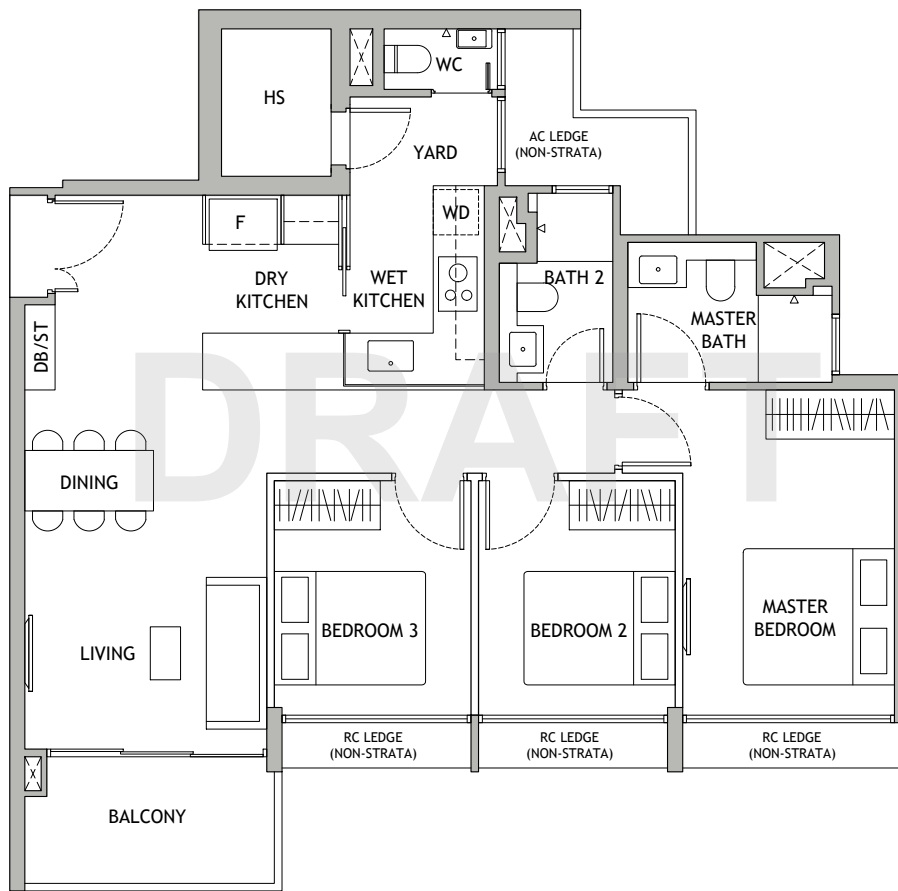


# 3 BEDROOM PREMIUM

# PINNACLE COLLECTION

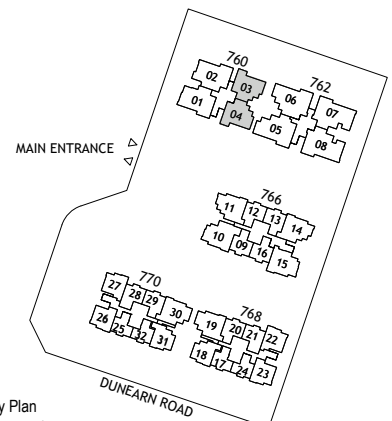
Type CP1

93 sqm | 1001 sqft  
 760 Dunearn Road  
 #02-03\* to #19-03\*  
 #02-04 to #19-04



**LEGEND:**  
 (WHERE APPLICABLE)

- |     |                        |    |  |
|-----|------------------------|----|--|
| AC  | Air-Conditioner        | WD | Washer cum dryer                         |
| CH  | Wine chiller           | WC | Water Closet                             |
| DB  | Distribution Board     |    | Void Space (excluded from strata area)   |
| F   | Fridge                 |    | Wall not allowed to be hacked or altered |
| HS  | Household Shelter      | *  | Mirrored Unit                            |
| PES | Private Enclosed Space |    |  |
| RC  | Reinforced Concrete    |    |  |
| ST  | Storage                |    |  |



DISCLAIMER : Area includes balcony or PES where applicable and excludes, among others, the AC ledge and RC ledge. Please refer to the key plan for orientation. All floor plans are approximate measurements only and are subject to government re-survey. The balcony or PES shall not be enclosed unless with the approved balcony or PES screen. The cost of screen and installation shall be borne by the purchaser.

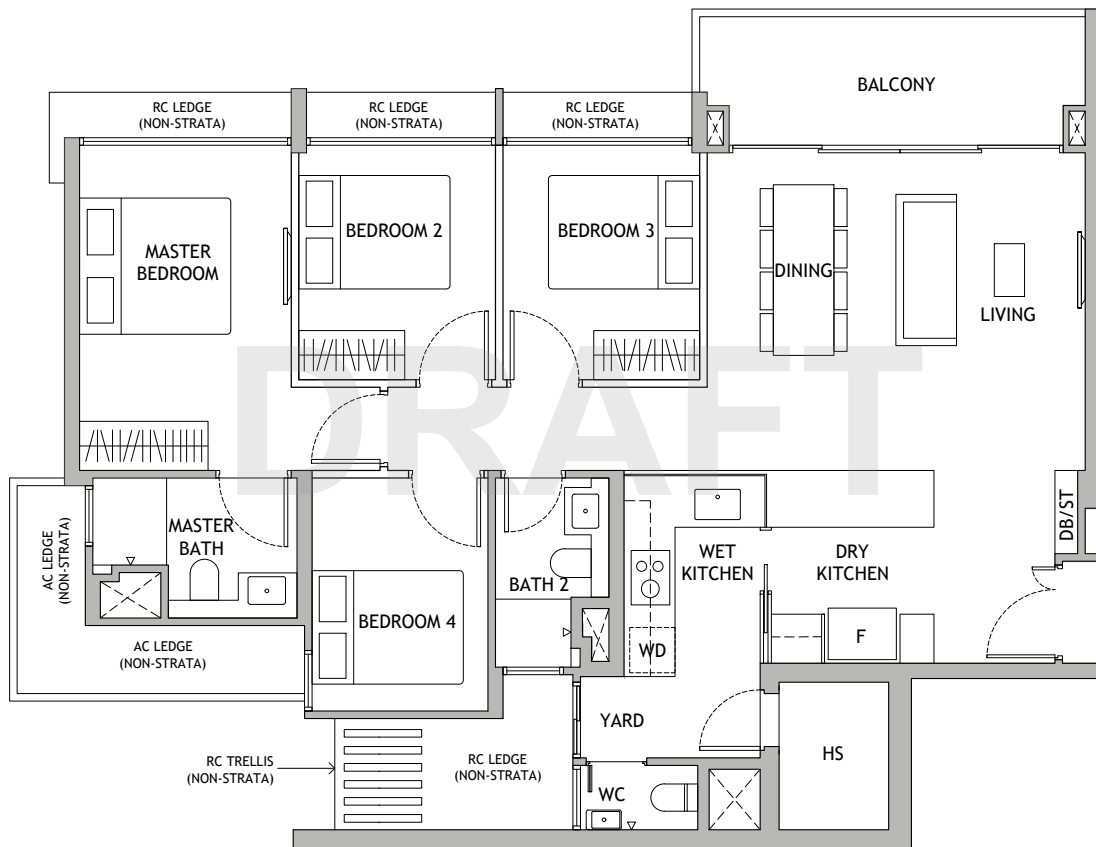
Key Plan  
 not to scale

# 4 BEDROOM

# PINNACLE COLLECTION

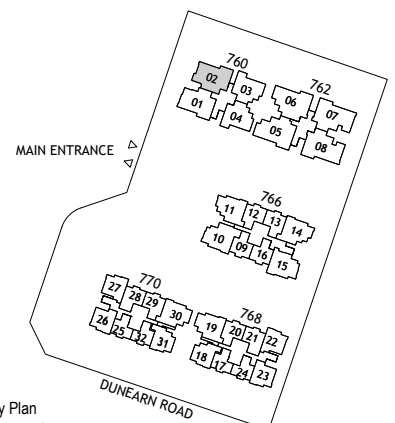
## Type D1

110 sqm | 1184 sqft  
 760 Dunearn Road  
 #02-02 to #19-02

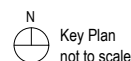


**LEGEND:  
 (WHERE APPLICABLE)**

- |     |                        |    |  |
|-----|------------------------|----|--|
| AC  | Air-Conditioner        | WD | Washer cum dryer                         |
| CH  | Wine chiller           | WC | Water Closet                             |
| DB  | Distribution Board     | ⊠  | Void Space (excluded from strata area)   |
| F   | Fridge                 | ■  | Wall not allowed to be hacked or altered |
| HS  | Household Shelter      | *  | Mirrored Unit                            |
| PES | Private Enclosed Space |    |  |
| RC  | Reinforced Concrete    |    |  |
| ST  | Storage                |    |  |



DISCLAIMER : Area includes balcony or PES where applicable and excludes, among others, the AC ledge and RC ledge. Please refer to the key plan for orientation. All floor plans are approximate measurements only and are subject to government re-survey. The balcony or PES shall not be enclosed unless with the approved balcony or PES screen. The cost of screen and installation shall be borne by the purchaser.

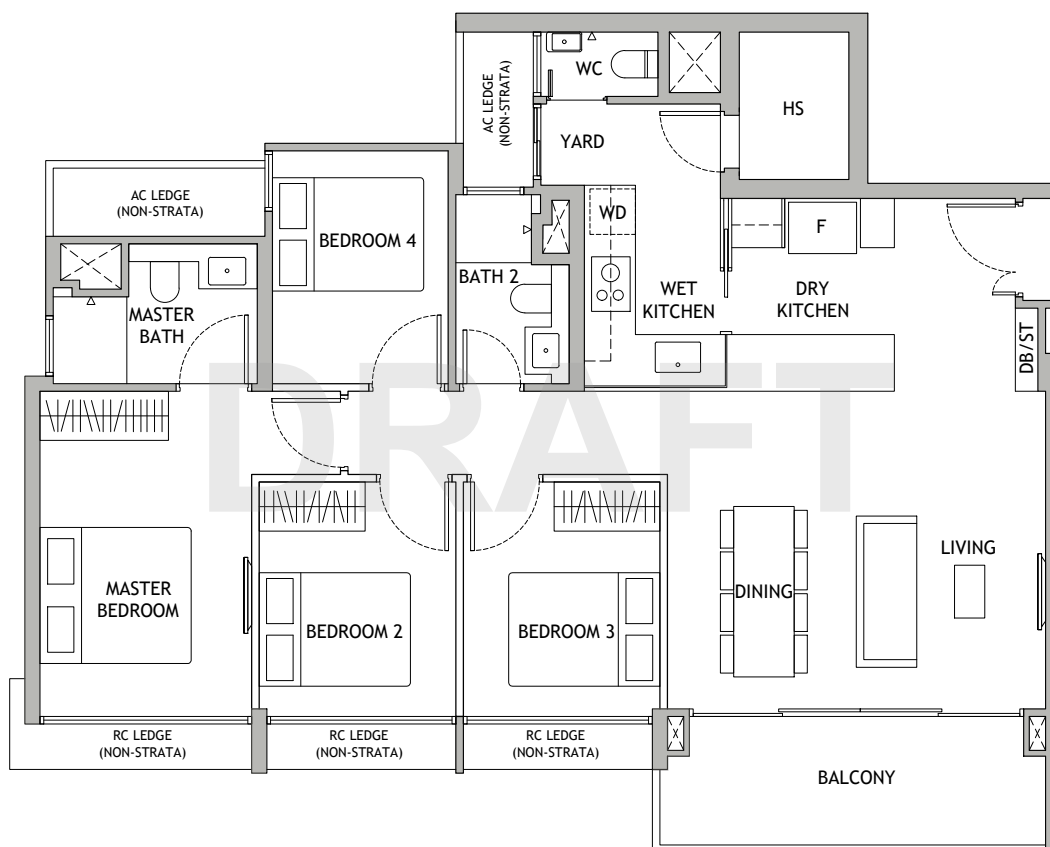


# 4 BEDROOM

# PINNACLE COLLECTION

## Type D2

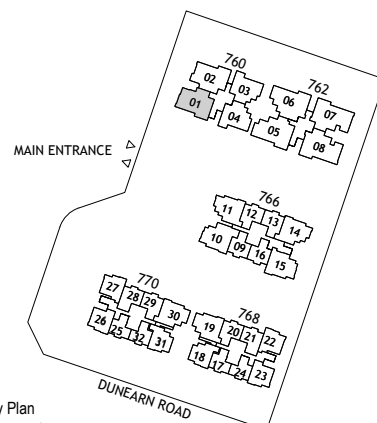
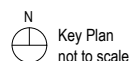
110 sqm | 1184 sqft  
 760 Dunearn Road  
 #02-01 to #19-01



**LEGEND:**  
 (WHERE APPLICABLE)

- |     |                        |    |  |
|-----|------------------------|----|--|
| AC  | Air-Conditioner        | WD | Washer cum dryer                         |
| CH  | Wine chiller           | WC | Water Closet                             |
| DB  | Distribution Board     |    | Void Space (excluded from strata area)   |
| F   | Fridge                 |    | Wall not allowed to be hacked or altered |
| HS  | Household Shelter      | *  | Mirrored Unit                            |
| PES | Private Enclosed Space |    |  |
| RC  | Reinforced Concrete    |    |  |
| ST  | Storage                |    |  |

DISCLAIMER : Area includes balcony or PES where applicable and excludes, among others, the AC ledge and RC ledge. Please refer to the key plan for orientation. All floor plans are approximate measurements only and are subject to government re-survey. The balcony or PES shall not be enclosed unless with the approved balcony or PES screen. The cost of screen and installation shall be borne by the purchaser.

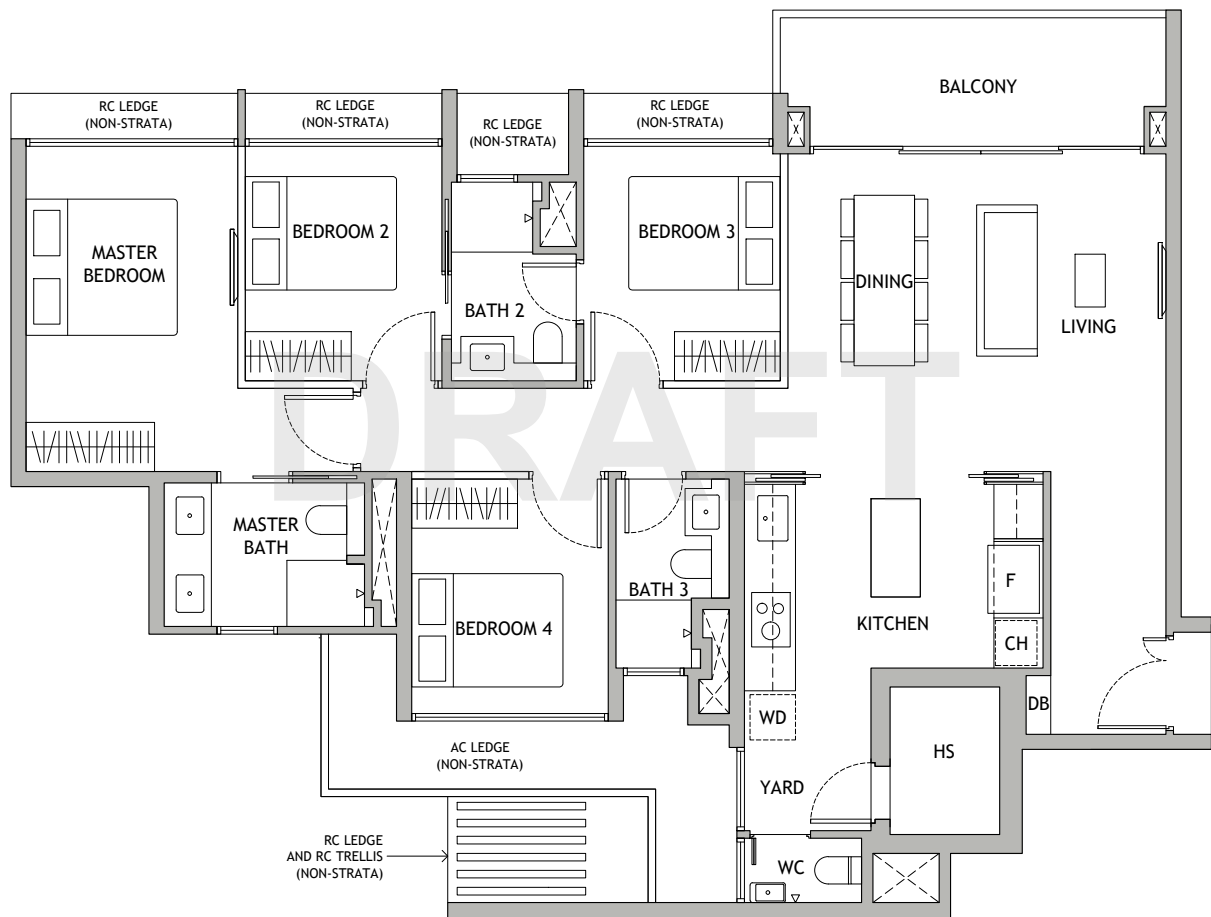


# 4 BEDROOM PREMIUM

# PINNACLE COLLECTION

Type DP1

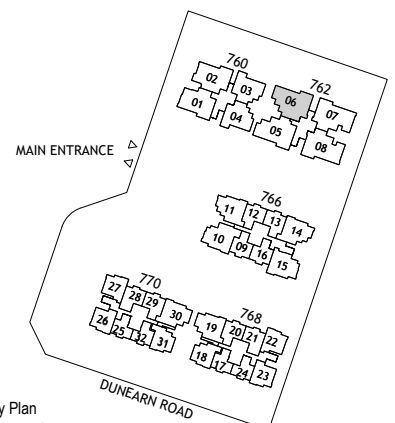
121 sqm | 1302 sqft  
 762 Dunearn Road  
 #02-06 to #19-06



**LEGEND:**  
 (WHERE APPLICABLE)

- |     |                        |    |  |
|-----|------------------------|----|--|
| AC  | Air-Conditioner        | WD | Washer cum dryer                         |
| CH  | Wine chiller           | WC | Water Closet                             |
| DB  | Distribution Board     | ⊠  | Void Space (excluded from strata area)   |
| F   | Fridge                 | ■  | Wall not allowed to be hacked or altered |
| HS  | Household Shelter      | *  | Mirrored Unit                            |
| PES | Private Enclosed Space |    |  |
| RC  | Reinforced Concrete    |    |  |
| ST  | Storage                |    |  |

DISCLAIMER : Area includes balcony or PES where applicable and excludes, among others, the AC ledge and RC ledge. Please refer to the key plan for orientation. All floor plans are approximate measurements only and are subject to government re-survey. The balcony or PES shall not be enclosed unless with the approved balcony or PES screen. The cost of screen and installation shall be borne by the purchaser.



N  
 Key Plan  
 not to scale

# 4 BEDROOM PREMIUM

# PINNACLE COLLECTION

Type DP2

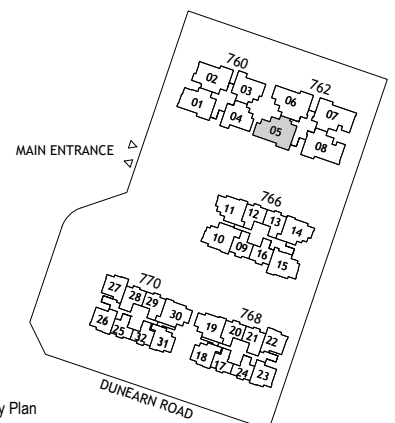
122 sqm | 1313 sqft  
 762 Dunearn Road  
 #02-05 to #19-05



**LEGEND:**  
 (WHERE APPLICABLE)

- |     |                        |    |  |
|-----|------------------------|----|--|
| AC  | Air-Conditioner        | WD | Washer cum dryer                         |
| CH  | Wine chiller           | WC | Water Closet                             |
| DB  | Distribution Board     |    | Void Space (excluded from strata area)   |
| F   | Fridge                 |    | Wall not allowed to be hacked or altered |
| HS  | Household Shelter      | *  | Mirrored Unit                            |
| PES | Private Enclosed Space |    |  |
| RC  | Reinforced Concrete    |    |  |
| ST  | Storage                |    |  |

DISCLAIMER : Area includes balcony or PES where applicable and excludes, among others, the AC ledge and RC ledge. Please refer to the key plan for orientation. All floor plans are approximate measurements only and are subject to government re-survey. The balcony or PES shall not be enclosed unless with the approved balcony or PES screen. The cost of screen and installation shall be borne by the purchaser.



Key Plan  
 not to scale

# 4 BEDROOM PREMIUM + STUDY

# PINNACLE COLLECTION

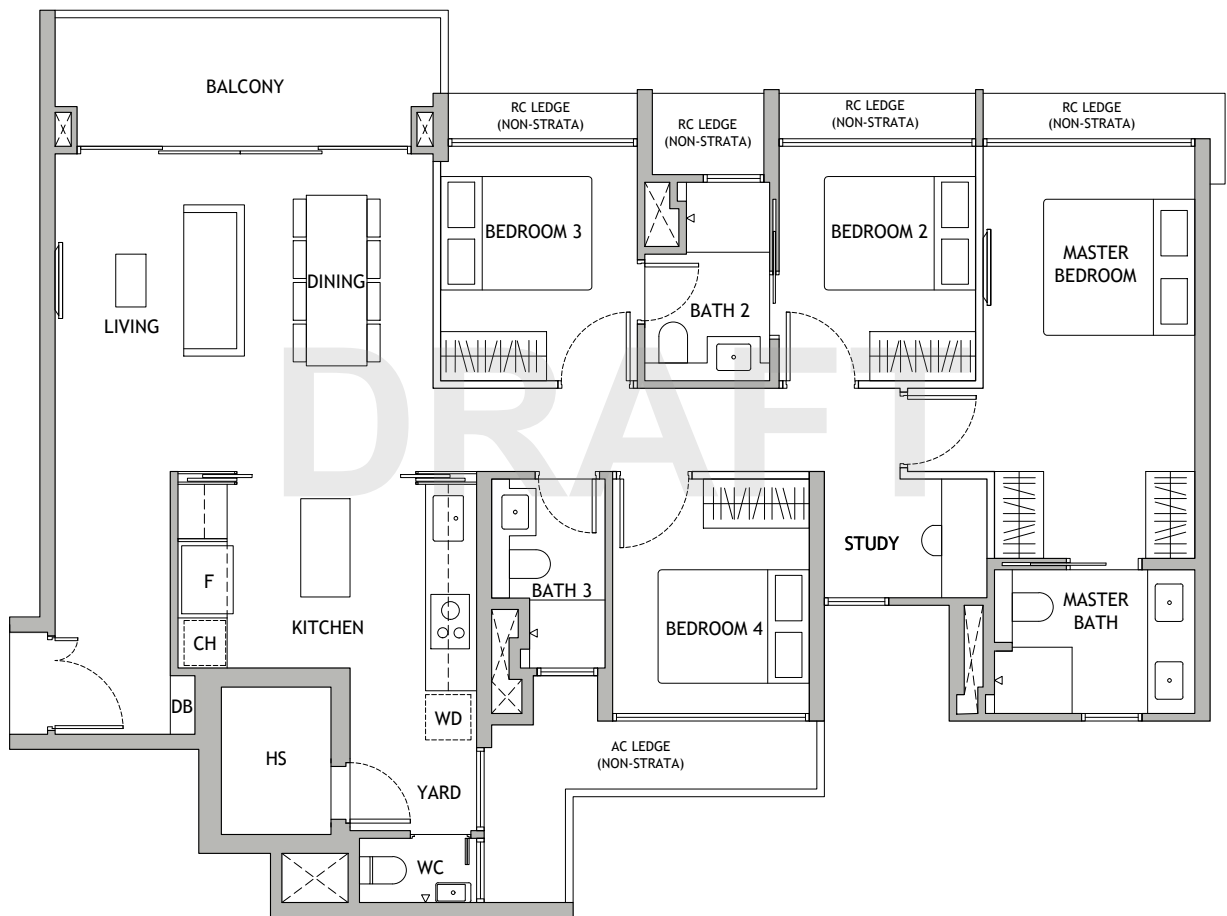
Type DPS1

128 sqm | 1378 sqft

762 Dunearn Road

#02-07 to #19-07

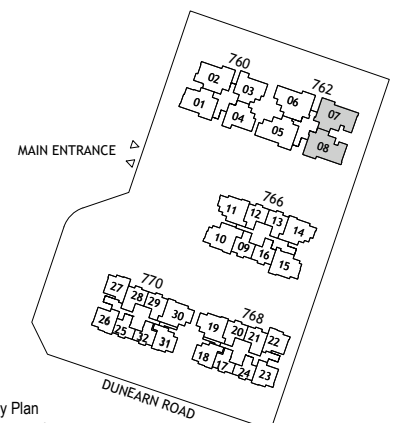
#02-08\* to #19-08\*



**LEGEND:  
(WHERE APPLICABLE)**

AC	Air-Conditioner	WD	Washer cum dryer
CH	Wine chiller	WC	Water Closet
DB	Distribution Board		Void Space (excluded from strata area)
F	Fridge		Wall not allowed to be hacked or altered
HS	Household Shelter	*	Mirrored Unit
PES	Private Enclosed Space		
RC	Reinforced Concrete		
ST	Storage		

DISCLAIMER : Area includes balcony or PES where applicable and excludes, among others, the AC ledge and RC ledge. Please refer to the key plan for orientation. All floor plans are approximate measurements only and are subject to government re-survey. The balcony or PES shall not be enclosed unless with the approved balcony or PES screen. The cost of screen and installation shall be borne by the purchaser.



Key Plan  
not to scale